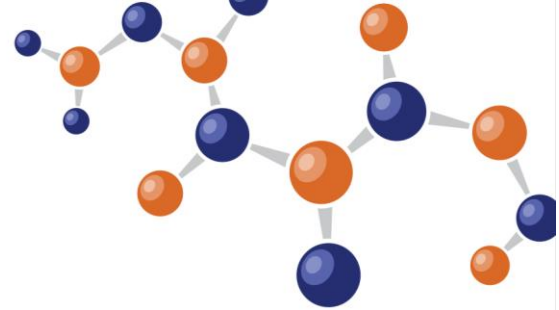




**EDUCATION &  
OPPORTUNITY**  
IN RADWASTE MANAGEMENT  
A NON-PROFIT ORGANIZATION



## WM2020 Registration Rates & Categories

REGISTRATION CATEGORIES	EARLY BIRD RATE (Pay by Jan 6, 2020)	STANDARD RATE (Pay by Feb 7, 2020)	ON-SITE RATE (Pay after Feb 7, 2020)
Full Technical	\$1,235	\$1,610	\$1,750
PAC /IPAC Full Technical	\$1,100	\$1,440	\$1,575
Young Professional Full Technical	\$618	\$805	\$875
Student Full Technical	\$45	\$50	\$50
Two Day Technical – M/Tu, Tu/W or W/Th	\$965	\$1,190	\$1,300
One Day Technical – Mon, Tue, Wed or Thurs	\$815	\$1,050	\$1,100
Full Exhibit Hall	\$675	\$755	\$795
Young Professional Full Exhibit Hall	\$338	\$378	\$398
One Day Exhibit Hall – Sun/Mon or Tue/Wed	\$400	\$450	\$480
Guest	\$125	\$150	\$175
Wednesday Evening Event	\$85	\$85	\$85
Lunch Add-On	\$60	\$60	\$60
Evening Reception Add-On	\$65	\$65	\$65
Sunday Workshops	\$130	\$180	\$225

**To receive the PAC/IPAC rate, one must be a WMS PAC/IPAC member.**

**To receive the Student rate:**

- One must be currently enrolled as a full-time student in a post-secondary educational program (credential required)
- One must be under 35 years of age

**To receive the Young Professionals rate:**

- One must **not** be a student by the time of the Conference
- One must be 37 years or younger by the time of the Conference

**Lunch Add-On** is available for per-day and per-ticket for Monday, Tuesday, Wednesday, and Thursday.

Evening Reception Add-On is available for per-day and per-ticket for Sunday, Monday, and Tuesday.

**Full Technical Registration includes:**

- Technical Session access Monday - Thursday
- Show Floor access Sunday - Wednesday
- Luncheons, if requested
- Refreshment breaks
- Evening receptions
- Online proceedings

**To receive the PAC/IPAC rate, one must be a WMS PAC/IPAC member.**

**To receive the Young Professionals rate:**

- One must **not** be a student by the time of the Conference
- One must be under 37 years of age by the time of the Conference

**To receive the Student rate:**

- One must be currently enrolled as a full-time student in a post-secondary educational program
- One must be under 35 years of age
- Student credentials are required

**Two Day Technical includes:**

- Two days of Technical Sessions access
- Two days of Show Floor access
- Luncheons, if requested
- Refreshment breaks
- Evening receptions
- Online proceedings

You may register for Monday/Tuesday, Tuesday/Wednesday, or Wednesday/Thursday.

**One Day Technical includes:**

- One day of Technical Sessions access
- One day of Show Floor access
- Luncheons, if requested
- Refreshment breaks
- Evening reception
- Online proceedings

You may register for Monday, Tuesday, Wednesday, or Thursday.

**Full Exhibit Hall includes:**

- Show Floor access Sunday - Wednesday
- Access to the Technical Sessions in the Panel Zone on the Show Floor
- Wednesday Show Floor luncheon
- Refreshment breaks
- Evening receptions
- Online proceedings

**One Day Exhibit Hall Sun/Mon includes:**

- Show Floor access on Sunday and Monday
- Access to the Technical Sessions in the Panel Zone on the Show Floor
- Refreshment breaks
- Sunday and Monday evening receptions
- Online proceedings

**One Day Exhibit Hall Tue/Wed includes:**

- Show Floor access on Tuesday and Wednesday
- Access to the Technical Sessions in the Panel Zone on the Show Floor
- Wednesday Show Floor luncheon
- Refreshment breaks
- Tuesday Evening reception
- Online proceedings

**Guest Registration includes:**

- Access to the evening receptions Sunday, Monday, Tuesday and Thursday
- Guest program breakfast Monday - Thursday at the Hyatt Regency Phoenix

Co-Workers and industry associates **do not** qualify as a Guest and must register separately to attend the conference.

**PLEASE NOTE:**

- \* Wednesday evening's event is a separate fee.
- \* Only one registration discount code may be entered per attendee, discount codes may not be combined. Discount will apply at the end of the registration process.
- \* No one under the age of 18 is allowed to attend.